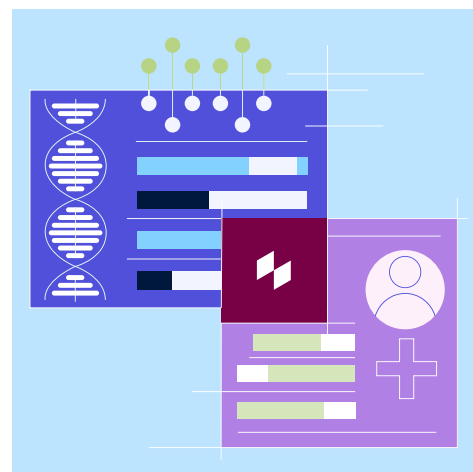


How Life Sciences Leaders Accelerate Development with Clinical-Molecular Evidence Solutions

Flatiron's suite of molecular data solutions brings together our highest-fidelity clinical and molecular data to make smarter decisions across the development lifecycle.



Multiple molecular data offerings to meet your needs



Flatiron Health Emerging Biomarkers Data

Explore novel biomarkers, treatment patterns, and resulting impact on outcomes with access to Flatiron's broadest pan-vendor, clinical-molecular dataset including 1,000,000+ patients.

Includes clinically relevant DNA- and RNA-based alterations and select IHC results available via physician-facing EHR reports.



Flatiron Health-Foundation Medicine Clinico-Genomic Database (CGDB)

Assess precision medicine and clinical development use cases with our dataset combining Flatiron's longitudinal real-world clinical data with Foundation Medicine's genomic testing data for 160,000+ patients.

Includes DNA panel sequencing, PD-L1 IHC for select patients, and access to data from RNA-based detection of gene fusion and rearrangement and digitized H&E images.



Flatiron Health-Caris Life Sciences Clinical-Molecular Database (CMDB)

Investigate early discovery, translational, and development use cases with our dataset linking Flatiron's longitudinal clinical data with Caris' comprehensive multiomics and digital pathology data for 85,000+ patients.

Includes comprehensive whole-exome and whole-transcriptome (23,000+ genes) sequencing across all patients, IHC on 25+ clinically relevant biomarkers, digital pathology, and access to unstained slides.

Depth And Scale In One Suite



Highest-Fidelity Clinical Data

Access longitudinal clinical data overlaid with molecular data for a comprehensive view of the patient journey. Our clinical data is sourced directly from EHRs across our network of community and academic sites, providing a real-world data pipeline with unmatched clinical depth, quality, and recency.



Flexible Configurations

Our suite of molecular data offerings allows for a range of flexible configurations to meet unique research needs, supporting use cases ranging from broad discovery to focused development.



Molecular Testing Vendor Variety

Access insights from across the top molecular testing vendors, giving you the breadth of molecular data needed to answer complex research questions.



Scientific and AI Rigor

We deploy cutting-edge AI to accelerate the extraction of complex biomarker and clinical details at scale, backed by industry-leading quality validation frameworks. Includes the validation of critical real-world clinical endpoints—real-world progression, real-world response, real-world overall survival.

KEY USE CASES

Optimize trial design

Inform target product profile design

Uncover and validate novel targets & resistance mechanisms

Contextualize clinical trial results

Develop predictive biomarkers for efficacy and safety

Inform program prioritization and strategy



READY TO ACCELERATE YOUR DEVELOPMENT?

Visit flatiron.com/contact/real-world-evidence-solutions to learn more.